

Date	Revision
1.6.2022	2

### Specification

1. Operating environmental temp: 0 to +°35C
2. Operating relative humidity: less than 90%.
3. Rated voltage: 220-240V 50/60Hz.
4. Wattage: 10W.
5. Conversion time: 1 second.
6. LED:SMT 2835LED\*42pcs.
7. Lumens: 1200lm.
8. Emergency duration: more than 180 minutes.
9. Battery installed or replaced:  
LiFePO4 3.2V 12000mah
10. Recharge time: 24 hours.
11. Non Maintained Only

### Important Information

**We recommend that luminaires are installed by a qualified electrician ensuring the installation complies with current IEE wiring regulations BS7671:2018 & local building control.**

- All tests should be carried out in accordance to EN 50172:2004.
- BELL will not accept responsibility for any claims arising from a poor installation.
- The light source of this luminaire is not replaceable: when the light source reaches end of life, the whole luminaire must be replaced.

### Important User Advice

- The ambient room temperature should not exceed +°35C
- Ensure that there is adequate free air ventilation around the fitting.
- Always switch off mains supply before installing.

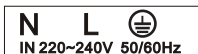
**Read these instructions before installation and retain for future reference**

**This equipment should be installed by a competent electrician**



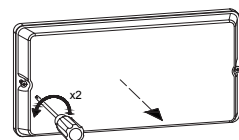
### Installation:

1. Connect mains supply wiring as follows:



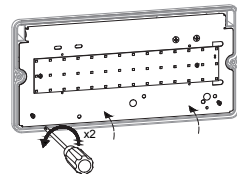
2. Power line & battery wires should be connected securely, and all screws fixed.
3. Switch on 220-240V AC supply and check if the green LED indicator illuminates to confirm charging of batteries.
4. Allow a short period for part charging of the batteries and then isolate the mains supply to the fitting in order to check the correct operation of the fitting in emergency mode. In the first use, after a continuous charge for 24 hours, a mains failure should be simulated to ensure that the fitting works for its specified time (only at a safe & appropriate time). The fitting will be fully charged with 24 hours continuous charging.

1



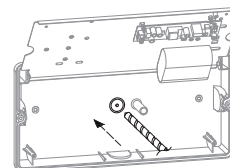
Remove diffuser

2



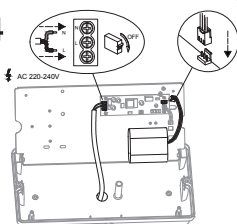
Unscrew the gear tray

3



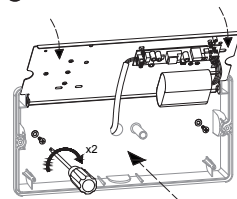
Drill an access hole in the body for the cable

4



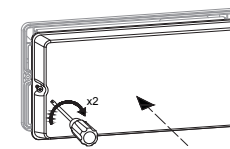
Connect a permanent 230V AC supply  
Connect the battery to the PCB

5



Fit unit securely to ceiling or wall

6



Refit diffuser and tighten screws carefully to ensure a good seal

### RECOMMENDED ROUTINE TEST PROCEDURE

The following tests are designed to ensure the continued protection of your premises and occupants. Because of the possibility of a failure of the normal lighting supply occurring shortly after a period of testing, all tests should, whenever possible, be undertaken at times of least risk, e.g. during daylight hours.

#### ONCE A DAY

Visual inspection of battery charge led.

#### ONCE A MONTH

Each unit should be energised from its battery for adequate time to ensure, by simulation of a failure of the normal lighting supply, the emergency mode is functioning correctly.

#### ONCE EACH YEAR

All units should be placed into emergency mode and checked that the duration provided by the battery meets the specified time period.

This product may contain substances that can be hazardous to the environment if not disposed of properly. Electrical and electronic equipment should never be disposed of with general household waste but must be separated for its correct treatment and recovery.

Where possible recycle your packaging.



**Technical Helpline +44 (0)1924 893380**

**www.bellighting.co.uk**

**British Electric Lamps Ltd**  
Unit A Foxbridge Way, Normanton Industrial Estate  
Normanton, West Yorkshire. WF6 1TN

T: +44 (0)1924 893380 F: +44 (0)1924 894320 E: sales@bellighting.co.uk

**www.bellighting.co.uk**

### Testing & Commissioning for Emergency Luminaire

- Ensure the Load is connected.
- Connect the battery.
- Switch on the Unswitched Supply  
- Check the Charge LED illuminates.
- Switch on the Maintained Supply  
- Check the LED illuminates as normal.
- Switch off the Maintained Supply.
- Switch off the Unswitched Supply  
- Check the Charge LED extinguishes and the load LED illuminates at a reduced output.
- Enter the commissioning date on the Battery Pack.  
Switch on the Unswitched Supply

<b>Luminaire Ref/Location</b>		<b>In Case of difficulty, contact the Installation Engineers:-</b> Tel: _____									
<b>Full Recharge Time 24 Hours</b>			<b>Duration 3 Hours</b>			<b>Lamp Type - LED</b>					
<b>ROUTINE TEST RECORD</b>											
	<b>Year 1</b>		<b>Year 2</b>		<b>Year 3</b>		<b>Year 4</b>		<b>Year 5</b>		
<b>Monthly Test</b>	<b>Signed</b>	<b>Date</b>	<b>Signed</b>	<b>Date</b>	<b>Signed</b>	<b>Date</b>	<b>Signed</b>	<b>Date</b>	<b>Signed</b>	<b>Date</b>	
Functional											
Functional											
Functional											
Functional											
Functional											
Functional											
Functional											
Functional											
Functional											
Functional											
Three Hour											